

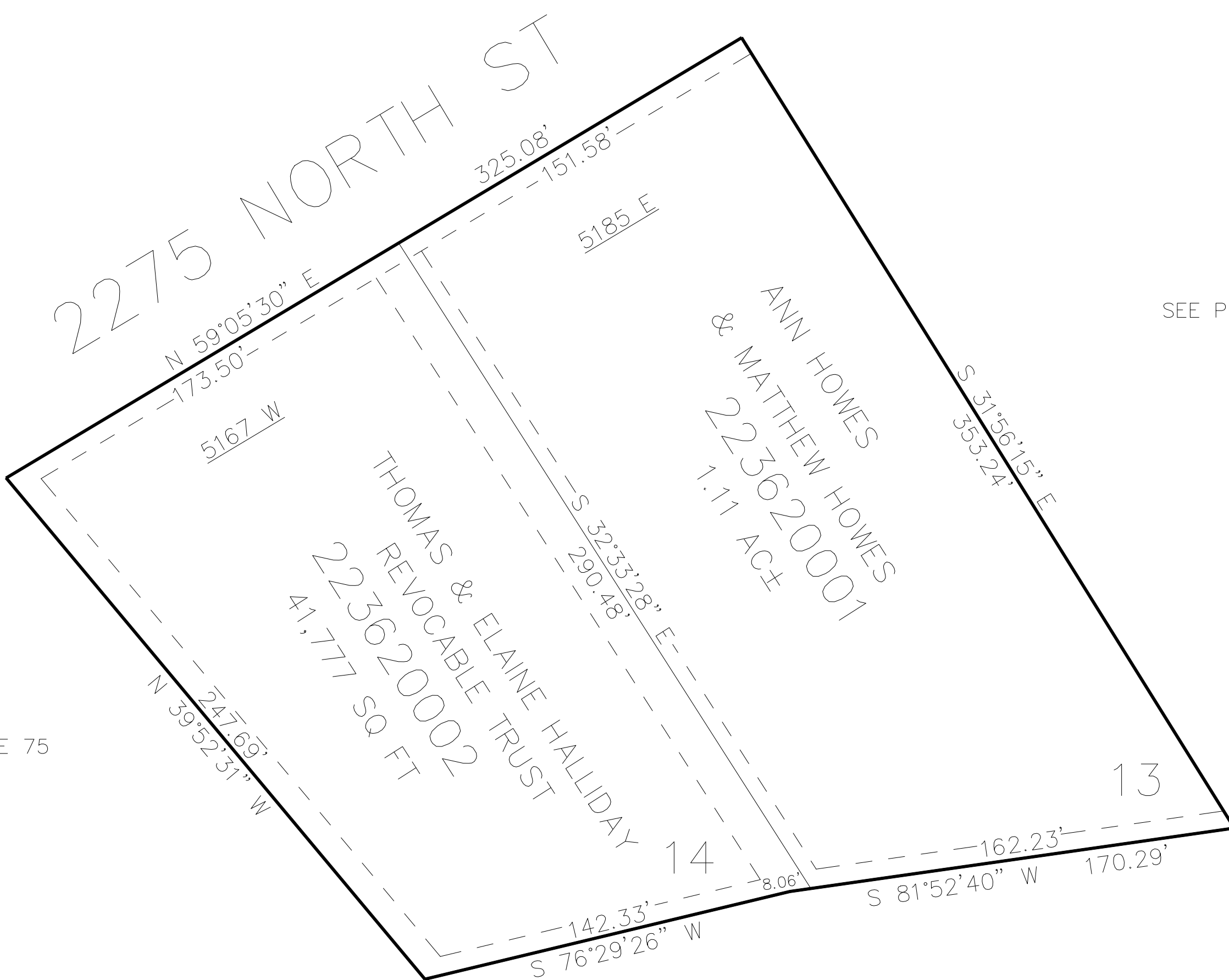
PART OF THE E.1/2, OF SECTION 34, T.7N., R.1E., S.L.B. & M.
ROBINS ROOST SUBDIVISION 1ST AMENDMENT

IN WEBER COUNTY

SCALE 1" = 40'

TAXING UNIT: 28

SEE PAGE 75



10' UTILITY & DRAINAGE EASEMENTS EACH
SIDE OF PROPERTY LINES AS INDICATED
BY DASHED LINES EXCEPT AS OTHERWISE
SHOWN.

SEE PAGE 75

FOR COMPLETE ENG DATA SEE
ORIGINAL DEDICATION PLAT IN
BOOK 85, PAGE 29 OF RECORDS.